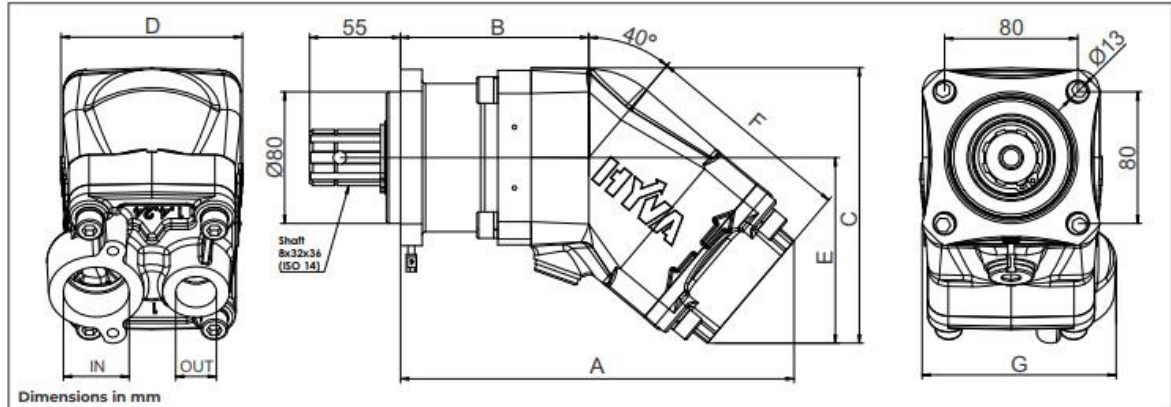


PISTON PUMPS - 4H SINGLE FLOW - BI-AXIAL: LEFT OR RIGHT ROTATIONAL

Part no.	Description	Displacement (cm ³ /rev)	Working pressure (bar)	Rotation frequency (rpm)	Suction port	Pressure port	Weight (kg)	Rotation
14569020	PISTON PUMP 034L-RH-4H-BA-¾-1	33.80	350	3000	G1	G¾	8.7	Right
14569025	PISTON PUMP 034L-LH-4H-BA-¾-1	33.80	350	3000	G1	G¾	8.7	Left
14569016	PISTON PUMP 040L-RH-4H-BA-¾-1¼	41.25	350	2500	G1¼	G¾	12.3	Right
14569017	PISTON PUMP 040L-LH-4H-BA-¾-1¼	41.25	350	2500	G1¼	G¾	12.3	Left
14569000	PISTON PUMP 047L-RH-4H-BA-¾-1¼	47.13	350	2500	G1¼	G¾	12.3	Right
14569001	PISTON PUMP 047L-LH-4H-BA-¾-1¼	47.13	350	2500	G1¼	G¾	12.3	Left
14569004	PISTON PUMP 064L-RH-4H-BA-¾-1¼	63.56	350	2500	G1¼	G¾	12.3	Right
14569005	PISTON PUMP 064L-LH-4H-BA-¾-1¼	63.56	350	2500	G1¼	G¾	12.3	Left
14569006	PISTON PUMP 080L-RH-4H-BA-¾-1¼	77.25	250	2100	G1¼	G¾	13.2	Right
14569007	PISTON PUMP 080L-LH-4H-BA-¾-1¼	77.25	250	2100	G1¼	G¾	13.2	Left



Part no.	Description	A	B	C	D	E	F	G
14569020	PISTON PUMP 034L-RH	209	96.5	153	106	100	127.5	97
14569025	PISTON PUMP 034L-LH	209	96.5	153	106	100	127.5	97
14569016	PISTON PUMP 040L-LH	237	113	167	109	113	127	117
14569017	PISTON PUMP 040L-LH	237	113	167	109	113	127	117
14569000	PISTON PUMP 047L-LH	237	113	167	109	113	127	117
14569001	PISTON PUMP 047L-LH	237	113	167	109	113	127	117
14569004	PISTON PUMP 064L-LH	237	113	167	109	113	127	117
14569005	PISTON PUMP 064L-LH	237	113	167	109	113	127	117
14569006	PISTON PUMP 080L-LH	237	113	167	109	113	127	117
14569007	PISTON PUMP 080L-LH	237	113	167	109	113	127	117

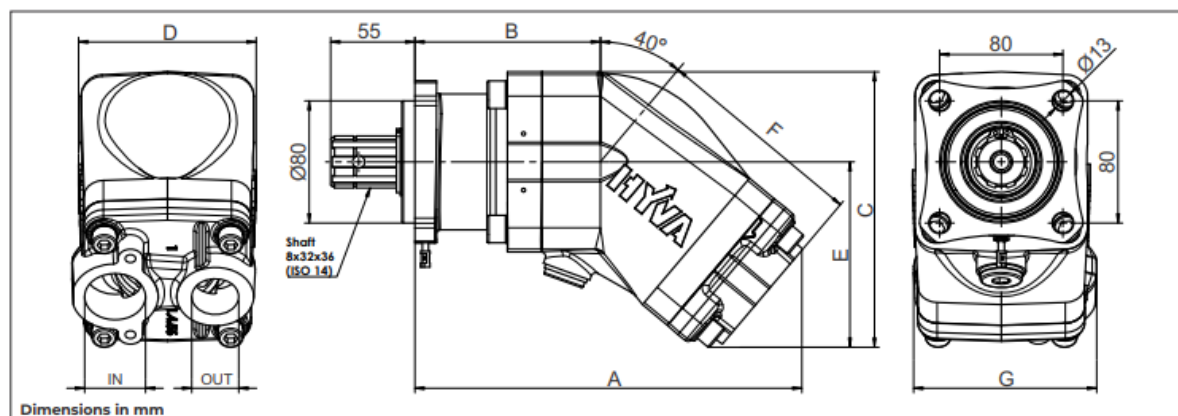


SEAL KITS

Part no.	Description
024 10 020	SEAL KIT FOR PISTON PUMP 034L
024 10 021	SEAL KIT FOR PISTON PUMPS 040L-047L-064L-080L

PISTON PUMPS - 4H SINGLE FLOW - BI-AXIAL: LEFT OR RIGHT ROTATIONAL

Part no.	Description	Displacement (cm ³ /rev)	Working pressure (bar)	Rotation frequency (rpm)	Suction port	Pressure port	Weight (kg)	Rotation
14569300	PISTON PUMP 084L-RH-4H-BAHP	84.20	350	2000	G1¼	G1	15	Right
14569305	PISTON PUMP 084L-LH-4H-BAHP	84.20	350	2000	G1¼	G1	15	Left
14569310	PISTON PUMP 096L-RH-4H-BAHP	95.50	350	2000	G1¼	G1	15	Right
14569315	PISTON PUMP 096L-LH-4H-BAHP	95.50	350	2000	G1¼	G1	15	Left
14569320	PISTON PUMP 108L-RH-4H-BAHP	107	350	2000	G1¼	G1	15	Right
14569325	PISTON PUMP 108L-LH-4H-BAHP	107	350	2000	G1¼	G1	15	Left
14569223	PISTON PUMP 130L-RH-4H-BA	131.62	250	2000	G1½	G1	18.2	Right
14569225	PISTON PUMP 130L-LH-4H-BA	131.62	250	2000	G1½	G1	18.2	Left



Part no.	Description	A	B	C	D	E	F	G
14569300	PISTON PUMP 084L-RH	252	121	180	115	121	137	120
14569305	PISTON PUMP 084L-LH	252	121	180	115	121	137	120
14569310	PISTON PUMP 096L-LH	252	121	180	115	121	137	120
14569315	PISTON PUMP 096L-LH	252	121	180	115	121	137	120
14569320	PISTON PUMP 108L-LH	252	121	180	115	121	137	120
14569325	PISTON PUMP 108L-LH	252	121	180	115	121	137	120
14569223	PISTON PUMP 130L-LH	271	123	198	125	135	157	130
14569225	PISTON PUMP 130L-LH	271	123	198	125	135	157	130

SEAL KITS

Part no.	Description
02410025	SEAL KIT FOR PISTON PUMPS 084L-096L-108L
02410022	SEAL KIT FOR PISTON PUMP 084L-108L-130L

